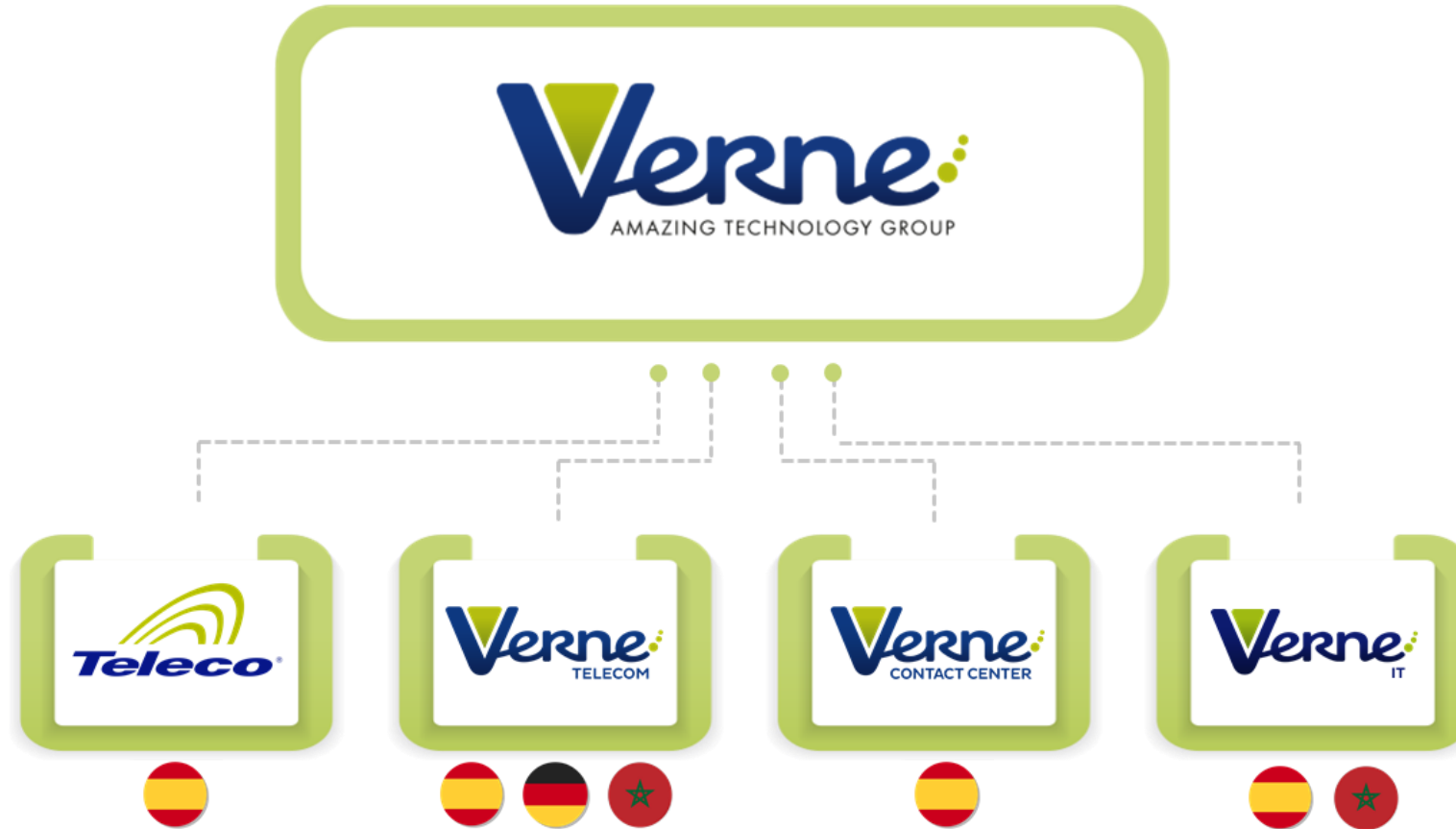


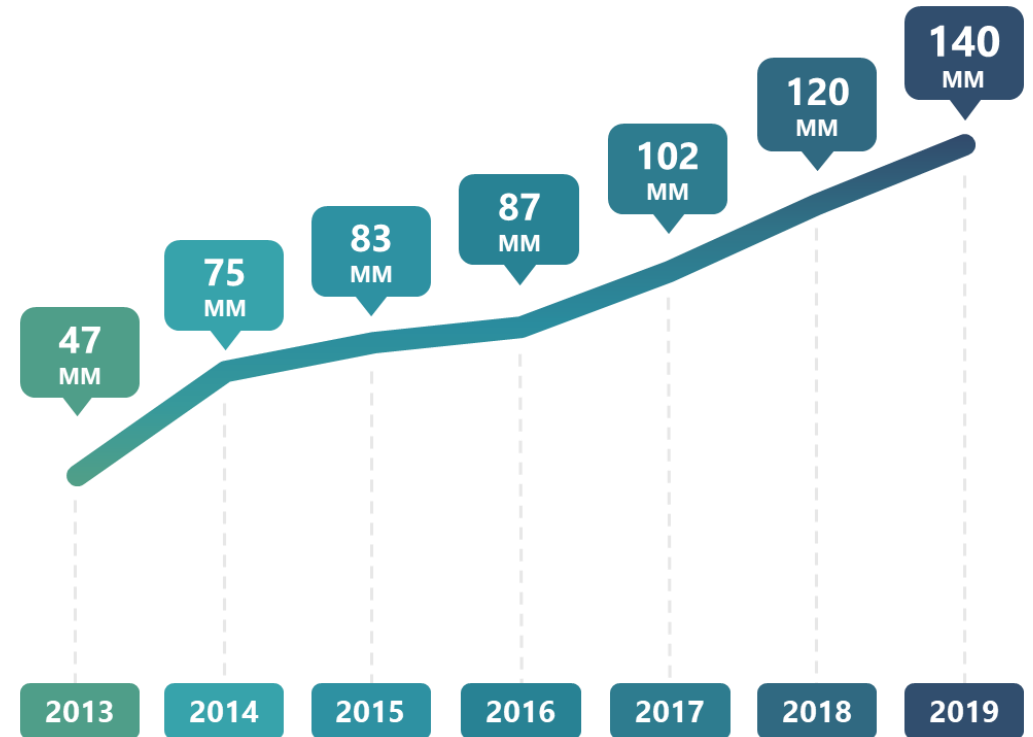
DEMAND FOR RESOURCES GERMANY 2020/2021



GROUP STRUCTURE



GROUP FIGURES



LOCATIONS

NATIONAL AND INTERNATIONAL ACTIVITY

Germany

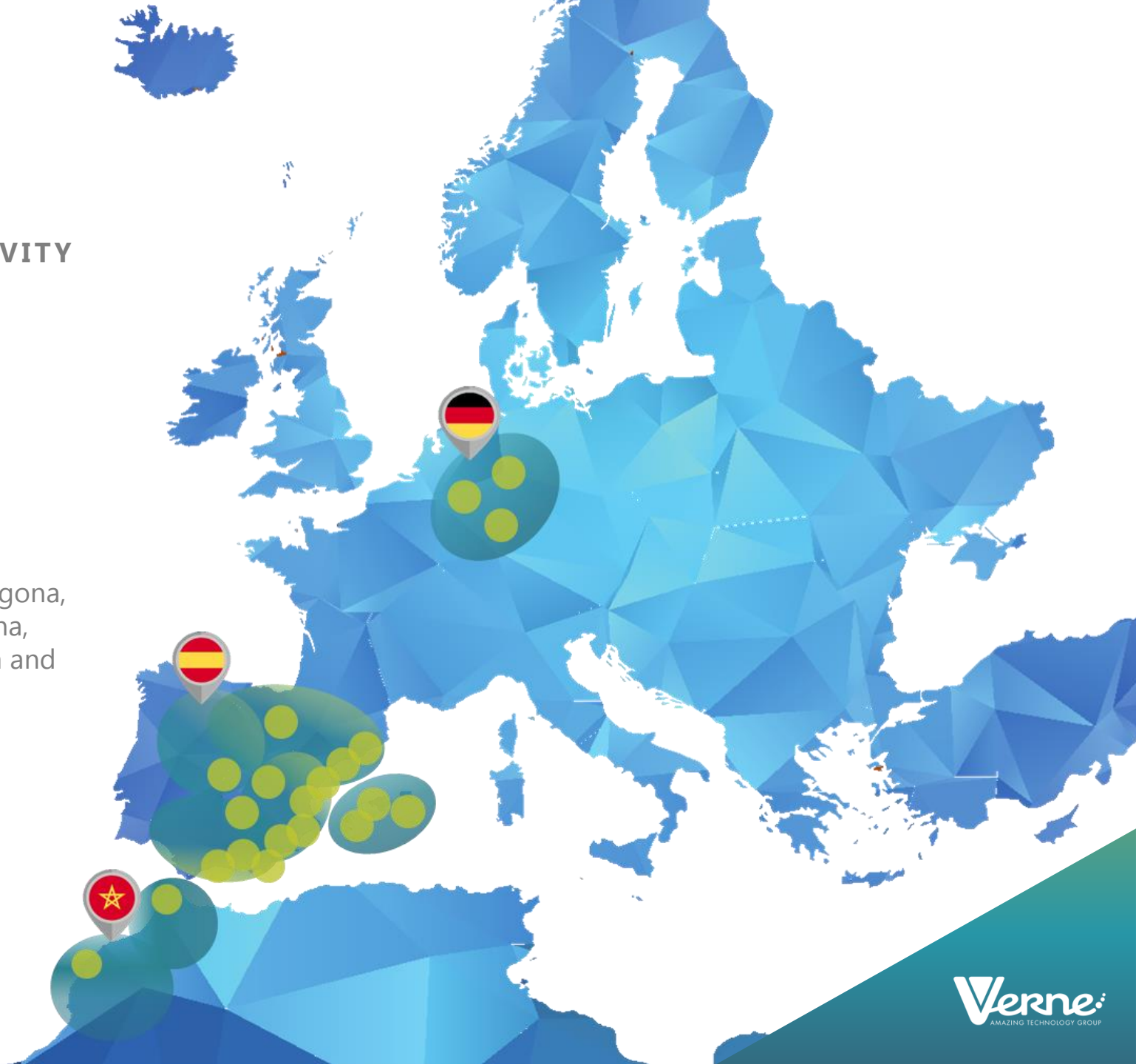
Düsseldorf, Frankfurt, Hannover, Hamburgo, Köln, Birkenfeld, Alzey Worms, Sachsen-Anhalt, Sachsen.

Spain

Madrid, Barcelona, Valencia, Alicante, Castellón, Tarragona, Palma de Mallorca, Ibiza, Menorca, Albacete, Pamplona, Ciudad Real, Murcia, Almería, Granada, Málaga, Ceuta and Melilla.

Marruecos

Casablanca, Tangier and Meknes.



BUSINESS AREAS



FIXED NETWORK



MOBILE NETWORK



INSTALLATION AND
MAINTENANCE



PMO
TECHNICAL OFFICE

TELCO SERVICES

We handle national and international projects efficiently to achieve success for our clients.

We provide key operators, vendors, and other companies with diverse services. We control every phase of end to end projects, delivering high quality on time.

KEY CLIENTS

Telefonica



orange™



MASMOVIL®



Deutsche Glasfaser



inwi™



ERICSSON 



NOKIA



ZTE



HUAWEI



cellnex 



TECHNOLOGIES:

- FTTX
- ADSL/XDSL
- HFC
- WDM
- LTE 800/ 1800
- Single RAN
- 5G

VERNE GERMANY

GLOBAL SITUATION



2020 PROJECTS				
CLIENT	LOCATION	TPOLOGY	Nr. PROJECTS	GLOBAL RESOURCES
	FRANKFURT HANNOVER DÜSSELDORF	FTTH NETWORK ENGINEERING CIVIL WORKS (TRENCHING) INSTALLATION OF FTTH NETWORKS FINAL CUSTOMER INSTALLATION	5	220
	BIRKENFELD ALZEY WORMS	FTTH NETWORK ENGINEERING CIVIL WORKS (TRENCHING) INSTALLATION OF FTTH NETWORKS FINAL CUSTOMER INSTALLATION	3	120
PROJECTS 2021				
CLIENT	LOCATION	TPOLOGY	Nr. PROJECTS	GLOBAL RESOURCES
	FRANKFURT HANNOVER DÜSSELDORF	FTTH NETWORK ENGINEERING CIVIL WORKS (TRENCHING) INSTALLATION OF FTTH NETWORKS FINAL CUSTOMER INSTALLATION	12	450
	SAXONY SAXONY ANHALT	FTTH NETWORK ENGINEERING CIVIL WORKS (TRENCHING) INSTALLATION OF FTTH NETWORKS FINAL CUSTOMER INSTALLATION	9	350
	BIRKENFELD ALZEY WORMS	FTTH NETWORK ENGINEERING CIVIL WORKS (TRENCHING) INSTALLATION OF FTTH NETWORKS FINAL CUSTOMER INSTALLATION	3	60

VERNE GERMANY

TYPOLGY OF PROJECTS



E2E PROJECT

- Planning
- Engineering
- Installation
 - Trench
 - POP / DP / CABINET
 - Fibre Works
 - Home Connections
- As-Built

SCOPE OF ACTIVITY

- Düsseldorf
- Cologne
- Birkenfeld
- Alzey warms
- Frankfurt
- Hamburg
- Hannover
- Saxony
- Saxony Anhalt

MACRO DATA

- +16,000 HP completed
- 22,000 E2E project homes in progress in 2020. +400 KM of trenching in city
- +200 km of trenching in rural and urban areas
- +4800 KM of cable blowing

Telefonica | O₂

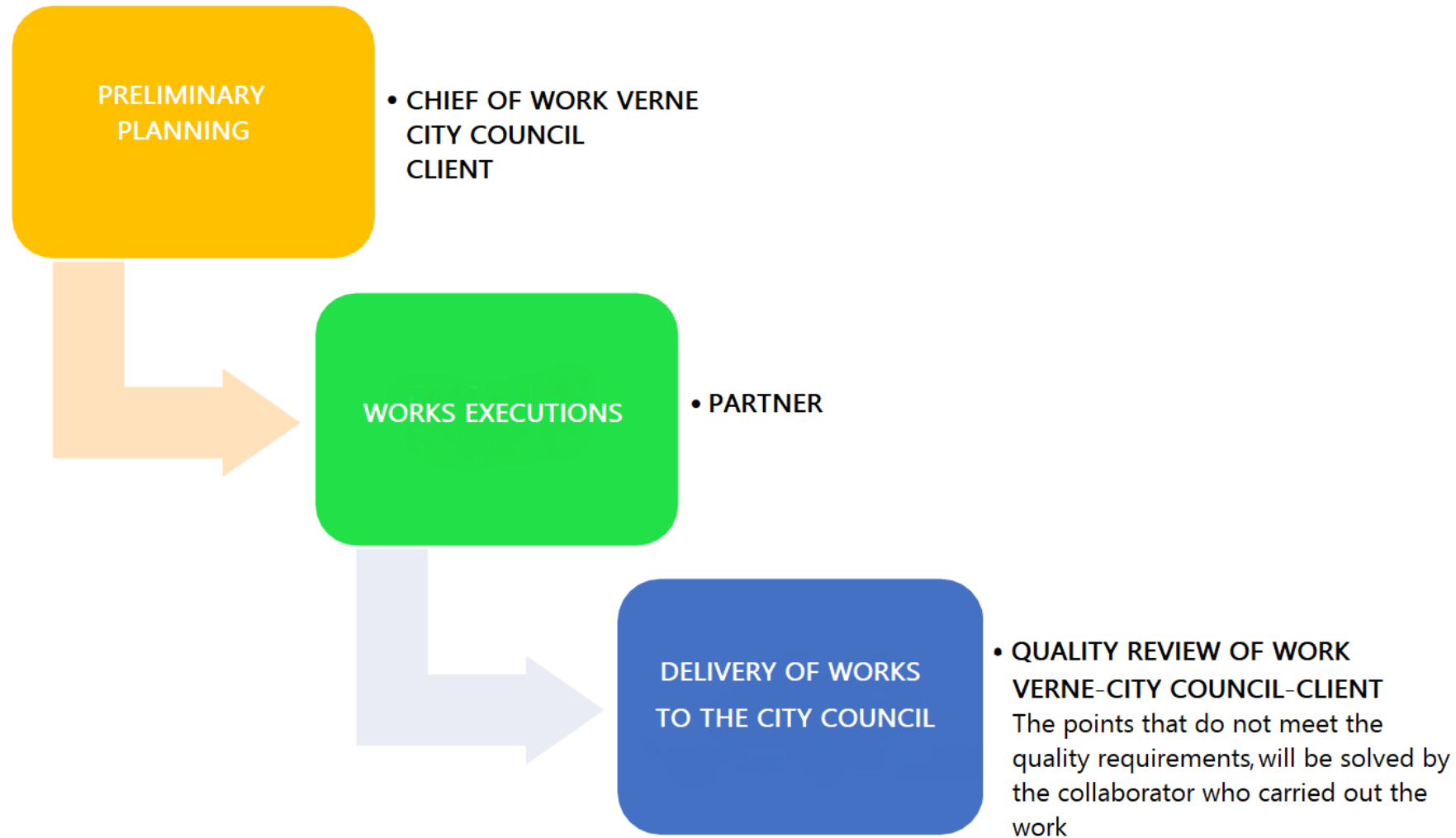


NOKIA

VERNE GERMANY

TYPOLGY OF PROJECTS

PROCESS OF EXECUTION OF WORK



VERNE GERMANY

PROJECT PARTNER

REQUIRED FOR CIVIL WORKS PROJECT PARTNER

Our requirements for project partners are as follows:

- Companies established in Germany or intending to establish themselves there.
- Financial solvency.
- Related experience. Company specialised in civil works, mainly pipelines.
- Capacity to provide from 20 to 40 resources. Teams of between 4 and 7 resources (1 Machinist, 1 Driver, 2 Officers, and at least 2 civil work technicians).
- It is necessary to have Machinery, tools and Vehicles available. VERNE offers the possibility of a hire-purchase plan if required.
- A guarantee of a minimum project of 2 years with growth projection.
- At least one person must be fluent in German, English or Spanish.

REQUIRED FOR FINAL CUSTOMER INSTALLATION PROJECT PARTNER

Our requirements for project partners are as follows:

- Companies established in Germany or intending to establish themselves there .
- Financial solvency.
- Related experience. Company specialised in connection and installation of optical fibre in final customer, in homes, as companies, and communities.
- Necessary tools and vehicles available for the development of the activity.
- Centrally managed by VERNE.
- Initial training provided in German by the operator, necessary for the development of the activity.
- A guarantee of a minimum project of 2 years with growth projection.
- All technicians must have a fluent level of German, B2 required.

VERNE GERMANY

OPERATING TEAM

OPERATION TEAM - PROJECT PARTNER

MACHINIST

- Driving, handling, and maintenance of the backhoe and trencher machinery.
- Movement and displacement of debris or materials.
- Load on transport vehicles.
- Strong skills in channels and ditches.
- Driving license required.
- Minimum of 2 years experience.

CIVIL WORKS TECHNICIANS

- Relevant experience in conducting / trenching.
- Relevant experience in brick pavement / kerb laying work.
- Leave site clean, tidy and safe.
- Loading and unloading of materials, machinery, tools, etc.
- Erecting and dismantling of temporary structures, such as traffic fences.
- Minimum of 2 years experience.

FINAL CUSTOMER TECHNICIANS

- End customer installation - fibre optic.
- The technicians must have a fluent level of German, B2 required.
- Knowledge of wiring and equipment installation.
- Maintenance and repair of breakdowns.
- Minimum one year experience.

OFFICIAL

- Expert in conducting / trenching.
- Expert in brick pavement / kerb laying work.
- Verification and validation of the quality of the work carried out by the team.
- Must be fluent in German, English or Spanish.
- Coordination of the personnel as civil Works technicians.
- Driving license required.
- Minimum of 2 years experience.

DRIVER

- Relevant experience of driving a truck.
- Loading and unloading of materials, machinery, tools, etc.
- Support to construction teams.
- Driving license required (C + E).
- Minimum of 2 years experience.

VERNE GERMANY

PROJECT PARTNER

CONVENIENCES PROVIDED BY VERNE TO OUR PROJECT PARTNERS

- Possibility of financial support: upfront of 2.500€ per worker incorporated into our projects to cover the expenses of the incorporation. Its amortization will be made through compensation with the invoicing of the first 4 months.
- Possibility of a hire-purchase plan for machinery: we have in stock everything necessary to carry out the required activity, so that the company would not need to move its machinery.
- Relocation support: we take care of both the search for a property and the management of the rental with the tenant.
- Legal support for establishment in the country: mediation with a local consultant, who will take care of all the necessary procedures for your establishment in the country, if necessary.

Terms of payment: possibility of two payments per month during the first four months of collaboration.

Collaborate with a company with solvent clients in long-term projects: the commitment of operators to deploy their own fibre optic networks guarantees workloads for several years.



Dechenstrasse 15a 1.OG
40878 Ratingen
Germany

Polígono Industrial las Atalayas,
Calle de la Libra, R51-54 03114 – Alicante
Tel. 965 063 636

www.vernegroup.com